

# IG® RPA MASTER MIX

*Fast, Reliable & Easy-to-Use*

IG® RPA Master Mix delivers powerful, reliable isothermal DNA amplification to accelerate molecular diagnostics and rapid assay development.



## IG® RPA Master Mix Activity

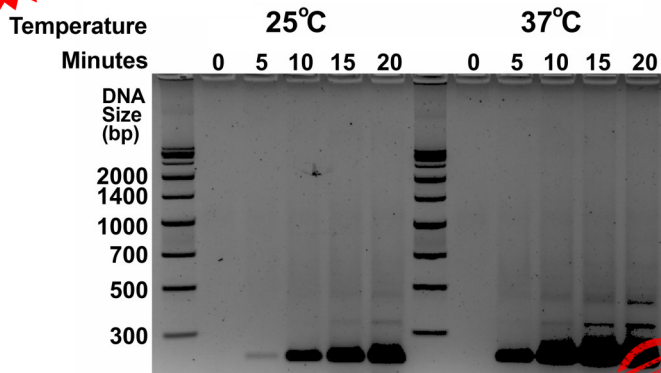


Fig. 2: IG RPA Master Mix amplified DNA in 10 minutes at 25°C, in 5 minutes at 37°C.



## Applications & Benefits

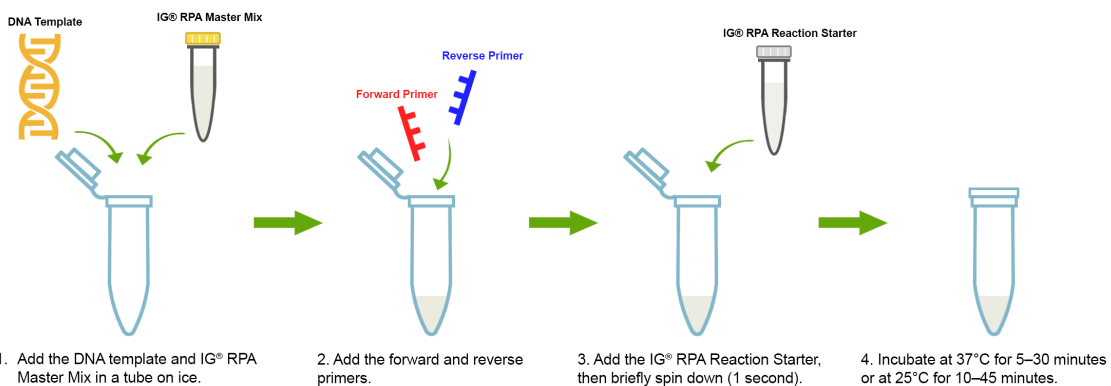
- Alternative to PCR. No thermocycler or other heavy equipment needed.
- Fastest RPA product in the market.
- Optimized for high sensitivity and consistent results. *Proprietary technology.*
- Convenience, Simplicity & Cost-Effectiveness. *Excellent for rapid point-of-care and on-site testing.*
- High-Quality & ISO Certified.
- Customization and Lyophilized Formulation Available. *We can meet your specific needs.*

## RPA vs PCR

Technique	Typical Incubation Temp (°C)	Incubation
RPA	25°C (Room temp.), 37°C or 42°C	5-15 mins
PCR	Thermocycler (94°C - 55°C - 72°C)	45-180 mins

Product Name	Pkg Size
IG® RPA Master Mix	25 rxns
	100 rxns
	500 rxns

## IG® RPA Master Mix Protocol



\*Mix by pipetting for Step 1, 2, and 3

**OEM, Partnerships & Bulk Order Discounts Available**

Intact Genomics is the leading global provider of products for Recombinase Polymerase Amplification (RPA) optimization.

**Contact us now!**



[sales@intactgenomics.com](mailto:sales@intactgenomics.com)

**IG Intact Genomics®**