



T7 Endonuclease I

Manual

Catalog #	3610	3612
Package Size	500 Units	1250 Units



Important!

-20°C Storage Required

- * Immediately inspect packages
- * Freeze upon receipt



visit us online for more
products & custom services

Intact Genomics, Inc.

Table of Contents

Product Description..... 3

Protein Purity..... 3

Product Source..... 3

Applications..... 3

Product Components..... 3

Storage..... 4

Quality Control..... 4

Protocol..... 4

Troubleshooting..... 7

References..... 7

Related Products 8

Ordering Information..... 8

Additional Information..... 9

Technical Support 9

Description:

T7 Endonuclease I, a stable homodimer of identical 149 amino acid subunits (1) is the product of a recombinant gene in *E. coli*. Mutations generated by CRISPR/ZFN/TALEN at desired target sites can be PCR-amplified, and the PCR products can be denatured and re-annealed to form mismatched DNA. If the mismatched DNA length position is more than 1 bp, T7 Endonuclease I can recognize and cleave it. It is useful for quantitatively estimating the nuclease-induced mutation frequency of gene edited cells.

Protein Purity:

The physical purity of this enzyme is $\geq 99\%$ as assessed by SDS-PAGE with Coomassie® blue staining (see figure below).

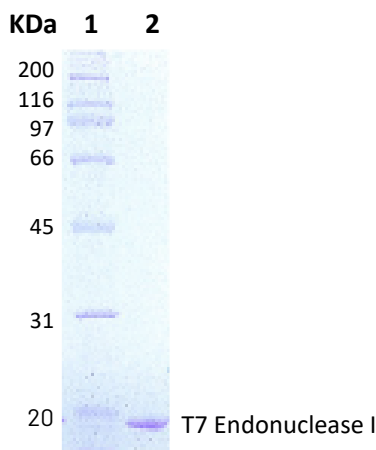


Figure 1: Lane 1. Protein marker
Lane 2. T7 Endonuclease I

Product Source:

E. coli BL21 (DE3) pLysS strain expressing T7 Endonuclease I gene.

Applications:

- Resolve four-way junction or branched DNA
- Detect or cleave heteroduplex and nicked DNA
- Randomly cleave linear DNA for shot-gun cloning

Product Components:

- T7 Endonuclease I
- 10x T7 Endonuclease I Reaction Buffer

Storage:

-20 °C

Storage Buffer:

50 mM Tris-HCl, 50 mM KCl, 1 mM DTT, 0.1 mM EDTA, 50% Glycerol, pH 7.5 @ 25°C

10x T7 Endonuclease I Reaction Buffer:

10 mM Tris-HCl , 50 mM KCl, 10 mM MgCl₂ , 1 mM DTT , pH 7.9 @ 25°C

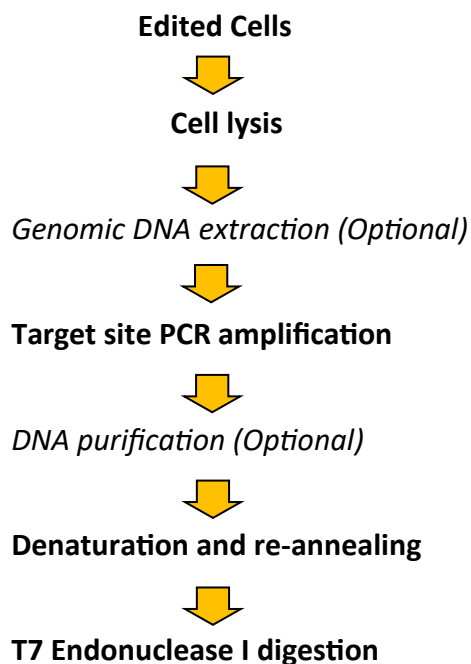
Quality Control:

T7 Endonuclease I is free from detectable contaminating nuclease activities.

Protocol:

This protocol describes how to determine genome targeting efficiency by digesting annealed mismatched PCR products with T7 Endonuclease I. In the first step, PCR products are produced from the genomic DNA of cells whose genomes were targeted using Cas9, TALEN, ZFN etc. In the second step, the PCR products are annealed and digested with T7 Endonuclease I. If two shorter fragments of the expected size are generated, which means that it has successfully introduced mutations small insertions and deletions (indels typically 2-20 bp) are present at the targeted chromosomal site. Fragments are analyzed to determine the efficiency of genome targeting.

Protocol Overview:



Procedures:

I. Sample Preparation

- **Option 1:** Genomic DNA extraction

Harvest cells and extract genomic DNA according to the manufacturer extraction protocol.

- **Option 2:** Cell lysate preparation

Collect cells and add 50-100 μ l Lysis buffer and lyse cells at 95°C for 5-10 min.

II. PCR Amplification

1. Thaw the kit components, mix and pulse-spin in microfuge each component prior to use.
2. Set up a 50 μ l PCR reaction using up to 100-200 ng of genomic DNA as a template. Assemble the following reaction:

Reagents	50 μ l Reaction
Genomic DNA	100-200 ng
Forward Primer (10 μ M)	2.5 μ l
Reverse Primer (10 μ M)	2.5 μ l
2x PCR Master Mix	25.0 μ l
H ₂ O up to	50.0 μ l

3. Mix the reaction and transfer the tubes to a PCR machine with the following thermocycling conditions:

PCR Cycling Conditions			
Steps	Temp.	Time	Cycles
Initial Denaturation	95°C	5 min	1
Denaturation	95°C	30 sec	30
Annealing	T _m -3°C	30 sec	
Extension	72°C	1 min	
Final Extension	72°C	5 min	1

4. Run 3-5 μl of the PCR product on a 1-2% agarose gel. The final PCR product should be within the range of 600 – 1000 bp.
5. (*Optional*) If necessary, purify the DNA by using either gel extraction kit or ampure XP beads according to the manufacturer protocol.

III. Hybridization (Denaturation and Reannealing)

1. Assemble reactions as follows:

Component	50 μl Reaction
PCR Product (wt)	15.0 μl
PCR Product (mutant)	15.0 μl
10x Endonuclease I Buffer	5.0 μl
H ₂ O	15.0 μl
Total	50.0 μl

2. Mix the reaction gently.
3. Heat at 95 $^{\circ}\text{C}$ for 5 min by using a heat block. Thermocycler can also be used for hybridization.
4. Turn off the heat block and cool down gradually to room temperature.

IV. T7 Endonuclease I Digestion

1. Assemble reactions as follows:

Hybridized DNA	5.0 μl
10x Endonuclease I Buffer	1.0 μl
T7 Endonuclease I (10 U)	1.0 μl
H ₂ O up to	10.0 μl

2. Incubate at 37 $^{\circ}\text{C}$ for 15-30 min.
3. Stop the reaction by adding 1.0 μl of 0.5 M EDTA.

4. Run 1-2% agarose gel to see the cleavage efficiency. A typical gel for Endonuclease I (Endo I) cleavage is shown below:

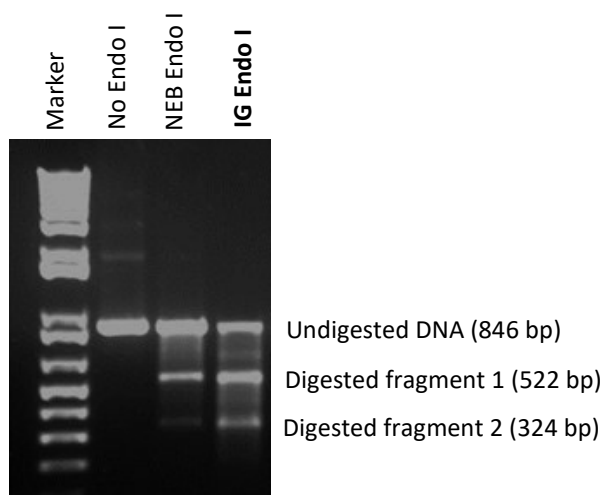


Figure 2: T7 Endonuclease I activity testing: Double-stranded (ds) DNA fragments containing two types of sequences are PCR amplified, denatured and annealed to produce mismatched (heterologous) dsDNA. Purified mismatched dsDNA digested with Endonuclease I from NEB and Intact Genomics (IG®) to compare the enzyme efficiency.

Troubleshooting:

Problems	Possible Causes	Recommendations
Non-Specific Cleavage	<ul style="list-style-type: none"> Non-specific PCR Amplification 	<ul style="list-style-type: none"> Purify DNA Optimized PCR Primers Optimized PCR Conditions
No Cleavage	<ul style="list-style-type: none"> Low T7 Endonuclease I Activity 	<ul style="list-style-type: none"> Add More T7 Endo I
No Expected Bands	<ul style="list-style-type: none"> Incomplete Lysis Poor PCR Primer 	<ul style="list-style-type: none"> Adjust the volume of lysis buffer according to the cell number Increase the lysis time Optimize PCR primers

Tips: Design primers flanking the modification with predicted **asymmetric** bands after cleavage by T7 Endonuclease I. Otherwise if equal sized fragments result from cleavage they will co-migrate on the gel and cannot be differentiated.

References:

- 1). Parkinson, M.J. and Lilley, D.M.J. (1997) The junction-resolving enzyme T7 endonuclease I: quaternary structure and interaction with DNA. J. Mol. Biol., 270, 169-178

Related Products:

- Cas9 Nuclease (Cat.# 3270, 3273, 3276)
- Cas12 Nuclease (Cat.# 3370, 3373, 3376)
- PEmax Enzyme (Cat.# 3473, 3476)
- Taq DNA Polymerase (Cat.# 3243)
- Taq DNA Polymerase 2x Premix (Cat.# 3249)
- i7® High-Fidelity DNA Polymerase 2X Master Mix (Cat.# 3257)

Ordering Information:

- Order online within the USA. Place orders on **www.intactgenomics.com** using our secure Shopping Cart.
- Order by email, phone, or fax.
Email: **sales@intactgenomics.com**
Phone: (314) 942-3655 | Toll-free : 855-835-7172 | Fax: (314) 942-3656
- Order via our distributors.

Intact Genomics owns the following registered trademarks granted by the United States Patent and Trademark Office (USPTO): Intact Genomics®, IG®, ig®, igTherapeutics®, FastAmp®, i7®, DirectPlate®.

All technology protocols discussed within this manual are assumed proprietary to Intact Genomics. This Product may be covered by pending or issued patents or may have certain limitations. Please contact us for more information.

Product Use Limitation and Disclaimers

This product is intended primarily for research purposes. By purchasing this material, the buyer is granted a non-transferable license to use it in research conducted by the buyer, including teaching, non-commercial, or commercial research activities. The buyer may not sell, distribute, or otherwise transfer this material, any of its components, or any unmodified derivatives to any third party without prior written consent from Intact Genomics.

Intact Genomics is dedicated to practicing and maintaining science and technology ethics. Buyer agrees to use the purchased materials in full compliance with applicable law and regulations.

Technical Support & Customer Services

Intact Genomics (IG®) is dedicated to customer satisfaction regarding the use of our products for your research needs. Each new lot of our products is thoroughly tested to ensure it meets the high quality standards and provide excellent results. We appreciate your business and your feedback regarding the performance of our products in your applications. Please follow the instructions carefully and contact us if additional assistance is needed.

Our hours are Monday - Friday, 8 AM to 5 PM, U.S. central standard time.

Intact Genomics, Inc.

11840 Westline Industrial Drive, Suite 120,
St. Louis, MO. 63146, USA

Phone: (314) 942-3655 | **Toll-free :** 855-835-7172 | **Fax:** (314) 942-3656

Email: sales@intactgenomics.com | ig@intactgenomics.com

Website: www.intactgenomics.com

© 2025 Intact Genomics, Inc
All Rights Reserved

