



Quick10™ Cloning Kit

Manual

Catalog #	4122
Package Size	6 reactions



Important!

-80°C Storage Required

- * Immediately inspect packages
- * Freeze upon receipt



visit us online for more
products & custom services

Intact Genomics, Inc.

Table of Contents

Product Description.....	3
Benefits.....	3
Applications.....	3
Product Components.....	4
Storage.....	4
Protocol	4,5
Additional Information and Process Overview.....	6
Technical Support.....	7

Description:

Intact Genomics (IG®) propriety Quick10™ Cloning kit and DirectPlate® technologies enable simple, rapid and highly efficient cloning. This cloning technology utilizes homologous assembly and ccdB selection which allows for nearly 100% cloning accuracy. This kit enables the direct cloning of one or two DNA fragments (<6kb total) through PCR into linearized cloning-ready IG® AmpR/KanR-pCR vector (4kb, provided in this kit)*. The PCR fragments can be generated by Intact Genomics' high fidelity i7® DNA polymerase or other high fidelity DNA polymerases. Primers need to have 12 to 15 bases of homology at IG® AmpR/KanR-pCR vector linear ends where the DNA fragments or PCR products need to fuse. The unpurified PCR products are then diluted 5-10 times by the dilution buffer included in this kit. No purification step is required. The diluted PCR products and linearized IG® AmpR/KanR-pCR vector can then be assembled in just 7 minutes at 37 °C, followed by a 3 minute transformation step on ice utilizing our Directplate® XL DH10B competent cells (included in this kit). DirectPlate® cells eliminate heat shock, lengthy incubations, and time-consuming outgrowth procedures. Utilizing this kit, DNA/PCR products can be assembled/transformed in **10 minutes** vs. other seamless/fusion cloning, conventional T/A, or restriction ligation cloning methods that can take up to 2 hours or more.

***Single selection vector or custom vector available upon request.**

Benefits:

- Combination of high fidelity PCR, assembly, and DirectPlate® transformation cloning technologies.
- Homologous assembly (vs. T/A or restriction ligation methods) displays <1% false-positive clones or nearly 100% cloning accuracy.
- Assembled/transformed in 10 minutes. Less time and less effort spent on cloning, transformation, and positive clone screening/identification.

Applications:

- Streamlined cloning of one or two (<6kb total) DNA fragments
- Single PCR product cloning
- Site directed mutagenesis
- High throughput cloning

Product Components:

- 5x Quick10-Assemble™ Premix
- IG® AmpR/KanR-pCR vector
- Dilution buffer
- Directplate® XL DH10B competent cells (6x50 µl)

Storage Temperature:

- -20 °C for premix, vector and buffer
- -80 °C for Directplate® XL DH10B competent cells

Protocol:

- 1) Design PCR primers for the DNA of interest with 12 to 15 bp at 5'-extensions to the ends of the linearized IG® AmpR/KanR-pCR vector sequence (e.g. 5'-extension forward primer: 15bp homology 5'-GCGAATTCTGCAGAT-3' and 3'-extensions reverse primer: 15bp-homology complementary strand 5'-TAGATGCATGCTCGA-3')
- 2) Amplify the DNA of interest with Intact Genomics i7® High-Fidelity DNA Polymerase 2x Master mix (cat. #3257) or any other high fidelity DNA polymerase. Run the PCR product on an agarose gel to determine the integrity of the PCR product.
- 3) Dilute the unpurified PCR product 5-10 times utilizing the provided dilution buffer. **Note: Increasing PCR product purity correlates to increasing cloning efficiency.**
- 4) Set up the assembly reaction as follows. Insert and vector molar ratio should be 2:1 to produce the highest number of colonies.

IG® AmpR/KanR-pCR vector 50ng	1.0 µl
Diluted PCR product(s) 100ng	x µl
5x Quick10-Assemble™ premix	4.0 µl
H ₂ O up to	20.0 µl

- 5) Mix the reaction mixture thoroughly in 0.2 ml PCR tube.
- 6) Incubate the reaction mixture at 37 °C for 7-15 minutes, then place on ice. **Caution: The assembly reaction maximum incubation is 30 minutes. Longer incubation times decrease cloning efficiency.**
- 7) Use 1.0 to 5.0 µl of the reaction mixture and transform into DirectPlate® XL DH10B competent cells (included in this kit). **Note: DirectPlate® competent cells are optimized for high transformation efficiency and to save a significant amount of time.**
- 8) Remove competent cells from the -80 °C freezer and thaw completely on ice and set up the transformation reaction as follows:

Assembly Reaction	1.0 to 5.0 µl
Directplate® XL DH10B competent cells	50.0 µl

- 9) Mix by gently pipetting up and down a few times then place on ice or room temperature for 3-10 minutes. **Caution: Longer incubation times decrease cloning efficiency.**
- 10) Spread 25 to 50 µl from each transformation directly onto LB plate containing 100 µg/ml ampicillin. We recommend plating two different volumes to ensure that at least one plate will have well-spaced colonies. Use a sterilized spreader or autoclaved ColiRoller™ plating beads to spread evenly. **Caution: Drying the plate too much will decrease cloning efficiency.**
- 11) Incubate the plates overnight at 37 °C.

Note: The procedures above are for IG® AmpR/KanR-pCR vector containing Ampicillin and Kanamycin resistant markers. To prevent self-ligation, IG® AmpR/KanR-pCR vector has the ccdB gene.



Assembly to Plate in 10 Minutes!

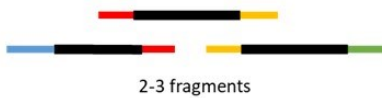
PCR

Set up PCR for assembling DNA fragment.

single fragment <6kb



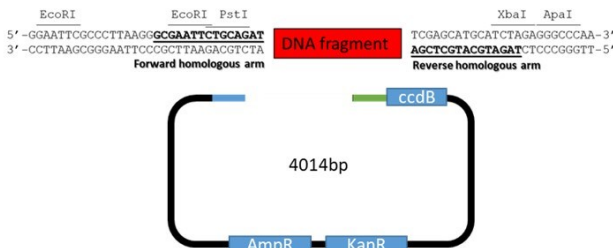
multi fragments <3kb Each



We recommend 15bp homologous in IG AmpR/KanR-pCR Vector (forward primer: 5'-GCGAATTCTGCAGAT-3' and reverse primer: 5'-TAGATGCATGCTCGA-3'). This kit can clone multiple fragments, although efficiency will decrease with larger fragments.

Vector

IG AmpR/KanR-pCR Vector.



IG AmpR/KanR-pCR Vector is a linearized vector that has ampicillin, kanamycin-resistant genes and ccdB gene for removing self-ligated clones.

Assembly

Set up the assembly cloning reaction.

IG AmpR/KanR-pCR Vector (50ng/μl)	1μl
DNA fragment (100ng/μl)	Xμl
5x Quick10-Assemble™ premix	4μl
Deionized water	20μl

Incubate the reaction for 7 min at 37°C in .02ml PCR tube. Then place on ice to stop reaction.

NOTE: The assembly reaction is completed within a 30 min incubation. Longer incubation times decrease cloning efficiency.

DirectPlate

Set up the transformation.

IG assembly reaction mixture	1-5μl
DirectPlate competent cell	50μl

Mix the IG assembling reaction mixture and DirectPlate™ competent cell gently. Place the tube in ice for 3 min. Immediately spread the mixture on YT plate containing Ampicillin. The plate then incubates overnight at 37°C.

1 12-16bp Homology

IG AmpR-PCR Vector

2

Assembly
7min in 37°C

3

DirectPlate
3min in Ice

4

Growth Time
Overnight
in 37°C

Intact Genomics owns the following registered trademarks granted by the United States Patent and Trademark Office (USPTO): Intact Genomics®, IG®, ig®, igTherapeutics®, FastAmp®, i7®, DirectPlate®.

All technology protocols discussed within this manual are assumed proprietary to Intact Genomics. This Product may be covered by pending or issued patents or may have certain limitations. Please contact us for more information. Purchase of this material conveys to buyer the non-transferable right to use the material purchased in research conducted by buyer, whether for teaching, non-commercial or commercial research purposes. Buyer may not sell or otherwise transfer these materials, its components, or unmodified descendants to a third party.

Product Use Limitation and Disclaimers

This product is for research purposes only. It is not intended for therapeutic or diagnostic purposes in humans or animals. This product contains chemicals which may be harmful if misused or direct human contact is made.

Intact Genomics is dedicated to practicing and maintaining science and technology ethics. Buyer agrees to use the purchased materials in full compliance with applicable law and regulations.

Technical Support & Customer Services

Intact Genomics (IG®) is dedicated to customer satisfaction regarding the use of our products for your research needs. Each new lot of our products is thoroughly tested to ensure it meets high quality standards and provides excellent results. We appreciate your business and your feedback regarding the performance of our products in your applications. Please follow the instructions carefully and contact us if additional assistance is needed.

Our hours are Monday - Friday, 8AM to 5PM, U.S. Central Standard Time.

Intact Genomics, Inc.

11840 Westline Industrial Drive, Suite 120,
St. Louis, MO. 63146, USA

Phone: (314) 942-3655 | **Toll-free :** 855-835-7172 | **Fax:** (314) 942-3656

Email: sales@intactgenomics.com | ig@intactgenomics.com

Website: www.intactgenomics.com

© 2024 Intact Genomics, Inc
All Rights Reserved

