

Intact Genomics®

Experts in Genomic Discovery

2024 Catalog



Intact Genomics, Inc.

11840 Westline Industrial Drive, Ste 120, St. Louis, MO 63146, USA

Toll-Free: 1-855-835-7172 Phone: 314-942-3655 Fax: 314-942-3656

Email: sales@intactgenomics.com www.intactgenomics.com



Intact Genomics (IG®) is an ISO13485:2016 certified biotech company that provides high-quality life science products and advanced genomic services to customers worldwide. We aim to empower scientific discoveries and innovation, develop cutting-edge technologies, and innovate life science products for isothermal amplification, gene editing, and simplified molecular cloning. It started in 2013 in a beautiful, quiet suburb of St. Louis, Missouri, USA. The company has developed over 100 products to support researchers from more than 2,000 laboratories worldwide to explore the genomic structure and function of microorganisms, plants, and animal species and discover solutions to critical challenges in human health, agriculture, and the environment.



Questions?

We have the answers!

At IG® our customer service representatives are some of the best in the business and are here to help you. Whether you have a technical question or need help with choosing the right product or services, we are here for you.

Contact us today!



1-855-835-7172



Intactgenomics.com



sales@intactgenomics.com

FOLLOW US ON SOCIAL MEDIA



TABLE OF CONTENTS

Recombinase Polymerase Amplification (RPA)	
RPA Kit & Enzymes.....	4
Glycerol-Free RPA Enzymes	5
Reverse Transcription Enzymes and Kits	5
Gene Editing	
Gene Editing Enzymes	6
sgRNA Synthesis Kit.....	6
Prime Editing Enzymes & Kits.....	7
PCR & qPCR	
FastAmp [®] Solution & Kits	8
PCR/qPCR Enzymes & Kits.....	8
Cloning Kits and Related Enzymes	
Quick 10 Cloning Kits	9
ig [®] Fusion Cloning Enzymes & Kits	9
Competent Cells	
DirectPlate [®] Competent Cells.....	10
<i>E. coli</i> Chemically & Electroporation Cells	11
Agrobacterium Competent Cells	
Tumefaciens & Rhizogenes Strains	12
Auxotrophic Agrobacteria	13
Custom Genomic Services	
Custom Competent Cells.....	14
Custom Protein Expression & Purification.....	14
DNA Library Construction & Screening	15

RPA

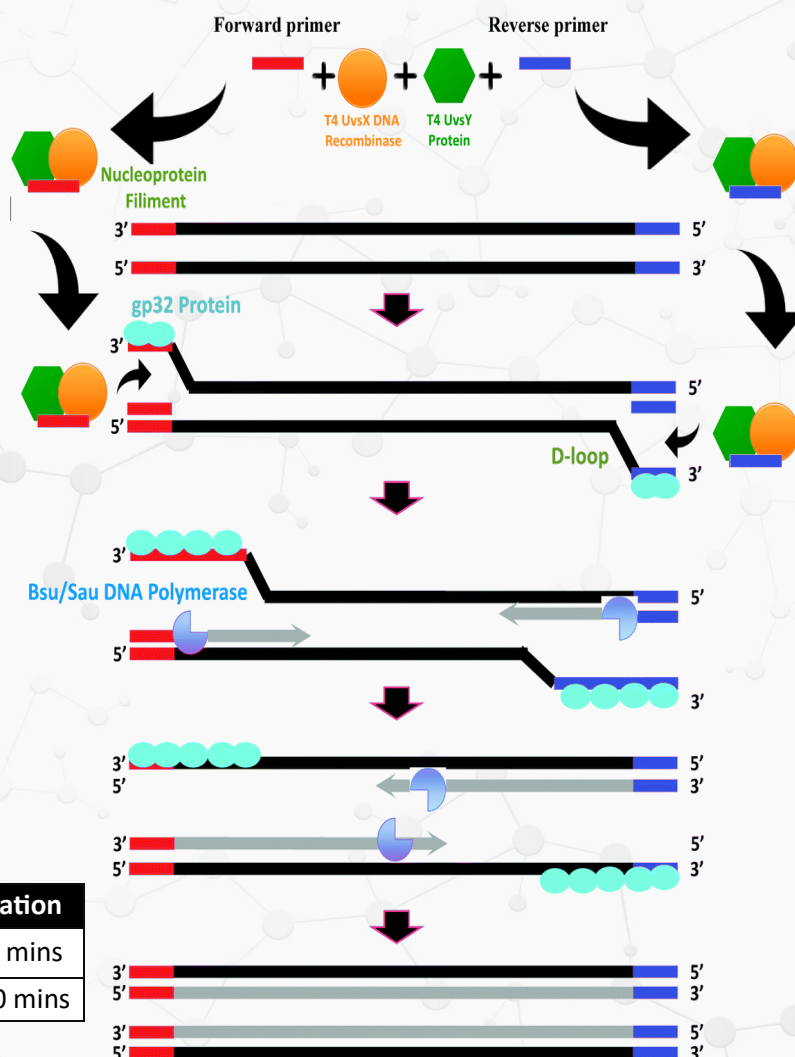
RECOMBINASE POLYMERASE AMPLIFICATION

Applications & Benefits

- Highly selective and sensitive isothermal amplification technique
- Alternative to PCR. No Thermocycler or other heavy equipment needed
- Speed and sensitivity. Excellent for rapid point-of-care and on-site testing. Does not require pretreatment of DNA/RNA samples.
- Real-time detection and implementation
- All enzymes thoroughly tested for activity and purity

RPA is an excellent candidate for developing rapid testing methods. In various molecular testing applications, RPA amplifies DNA at a constant temperature (37-42°C) using a recombinase enzyme, primers, a single-stranded DNA binding protein (SSB), and a strand-displacing DNA polymerase. T4 UvsX Recombinase is used in combination with its accessory protein, UvsY. The recombinase interacts with primers to form nucleoprotein filaments. This complex is able to bind with homologous double-stranded DNA via a strand exchange. After the exchange, an SSB protein, T4 gp32, stabilizes the displaced strand. Bsu or Sau DNA polymerase extends the primers, creating a new complete copy of the template, and amplification proceeds similarly to Polymerase Chain Reaction (PCR).

Product Name	Cat #	Pkg Size	Conc.
ig® RPA Kit	3526	25 rxns	
	3530	100 rxns	
T4 UvsX DNA Recombinase	3562	100 µg	5µg/µl
	3565	500 µg	
	3567	1000 µg	
T4 UvsY Protein	3572	100 µg	2µg/µl
	3575	500 µg	
	3577	1000 µg	
T4 gp32 Protein	3511	100 units	5µg/µl
	3512	200 units	
	3515	500 units	10 µg/µl
	3516	500 units	
Bsu DNA Polymerase, Large Fragment	3582	200 units	5units/µl
	3585	1000 units	
	3587	2000 units	
Sau DNA Polymerase, Large Fragment	3592	200 units	
	3595	1000 units	



RPA vs PCR

Technique	Typical Incubation Temp (°C)	Incubation
RPA	37-42°C	10-20 mins
PCR	Thermocycler (94°C –55°C –72°C)	45-180 mins

RPA & RT

Intact Genomics provides high-quality Glycerol-Free RPA enzymes. These enzymes are excellent tools for customers to develop their own unique rapid testing tools for human health, agricultural applications, next-generation sequencing applications, and more.

GLYCEROL-FREE RPA ENZYMES

Product Name	Cat #	Pkg Size	Conc.
Glycerol-Free T4 UvsX DNA Recombinase	3562GF	100 µg	5µg/µl
	3565GF	500 µg	
	3567GF	1000 µg	
Glycerol-Free T4 UvsY Protein	3572GF	100 µg	2 µg/µl
	3575GF	500 µg	
	3577GF	1000 µg	
Glycerol-Free T4 gp32 Protein	3513GF	250 µg	10µg/µl
	3516GF	500 µg	
Glycerol-Free Bsu DNA Polymerase, Large Fragment	3582GF	200 units	5 units/µl
	3585GF	1000 units	

Product Name	Cat #	Pkg Size	Conc.
Exonuclease III	3412	10000 units	100 units/µl
	3415	25000 units	
Endonuclease IV (Nfo)	3422	2000 units	10 units/µl
	3425	5000 units	
FastAmp® Solution for Isothermal DNA/RNA Amplification	4632	50 ml, 100 rxns	

Reverse Transcription Enzymes & Kits

Product Name	Cat #	Pkg Size	Conc.
igScript™ Reverse Transcriptase	3344	50,000 units	200 u/µl
igScript™ First Strand cDNA Synthesis Kit	4312	25 rxns	
	4314	100 rxns	
RNase Inhibitor, Murine	3714	20,000 Units	
igScript™ One Step RT-qPCR Kit	4214	100 rxns	20 µl rxn vol
	4218	500 rxns	
igScript™ Probe-Based One Step RT-qPCR Kit	4212	200 rxns	
	4215	500 rxns	
	4217	1000 rxns	
	4219	5000 rxns	
igScript™ Probe-Based RT-qPCR Kit	4243	50 rxns	
	4245	100 rxns	
	4247	500 rxns	

Intact Genomics developed a unique proprietary igScript™ Reverse Transcriptase and manufactured a variety of kits and enzymes for various reverse transcription needs.

Benefits

- ◆ Active temperature up to 55°C
- ◆ Highly efficient at producing full-length cDNA from as little as 50pg of total RNA
- ◆ Recombinant MMLV reverse transcriptase with greatly reduced RNase H activity
- ◆ Available in many varieties including in our cDNA Synthesis kit

OEM, Partnerships & Bulk Orders Discounts Available

GENE-EDITING & CRISPR

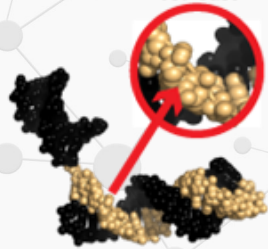
At Intact Genomics, we believe in the power of unlocking nature's code for the betterment of humanity. Intact Genomics is proud to introduce a high quality product line for Gene-Editing. As part of our on-going mission, we are bringing you the very best and most innovative biotechnologies, today. From Cas enzymes to Prime-Editing kits, researchers can find the best tools to maximize their genome-editing experiments.

sgRNA Synthesis Kits

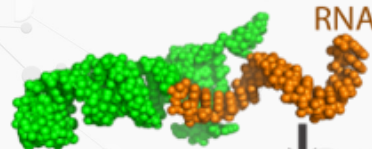
3 STEP GUIDE TO IN VITRO GENE EDITING

1.) Identify your target gene

Target DNA Sequence for Cas9

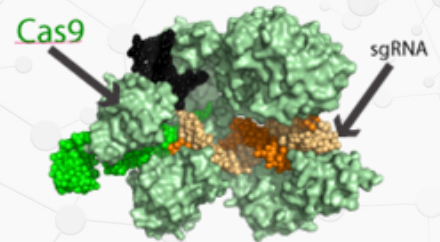


2.) Use IG sgRNA synthesis kit for guiding Cas9 to your gene.

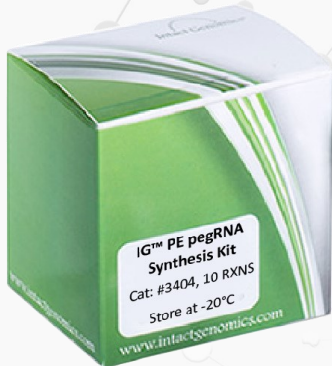


The entire molecule is the "Guide RNA". The Guide RNA is sgRNA sequence you want to synthesize. This will bring Cas9 to the target DNA site.

3.) Following the 2nd step, your IG Cas9a enzyme and your sgRNA are now ready to make an RNP Complex



sgRNA guides the Cas9 to the DNA target site where Cas9 will cut the DNA



Product Name	Cat #	Package Size
sgRNA Synthesis Kit for Cas9 Nuclease	3203	10 rxns, 20 µl
	3206	10 rxns, 100 µl
sgRNA Synthesis Kit for Cas12a Nuclease	3303	10 rxns, 20 µl
	3306	10 rxns, 100 µl
Cas9	3273	80 µg
	3276	400 µg
Cas12a	3273	80 µg
	3276	400 µg
RNA Cleanup Kit	4003	25 preps
	4005	100 preps
T7 RNA Polymerase	3292	5,000 units
	3296	25,000 units

CRISPR PRIME-EDITING

Introducing the first commercially available PEmax Enzyme and PE pegRNA Synthesis Kit on the market. The IG[®] PEmax Enzyme and PE pegRNA Synthesis Kit provide excellent quality, reliability, and ease of use.

PEmax[™] System Feature & Benefits

- Wide variety of genetic editing possibilities
- Specific DNA/RNA targeting
- Precision gene therapy research
- Up to 20x more efficient than previous methods
- Targeted DNA insertions

Product Name	Cat #	Package Size
PEmax Enzyme	3473	80 µg
	3476	400 µg
PE pegRNA Synthesis Kit	3404	10 Reactions (20 µl rxn volume)
	3406	10 Reactions (100 µl rxn volume)

PEmax and Prime-Editing, a quick over-view:

PEmax is purified recombinant *Streptococcus pyogenes* Cas9 nickase mutant (H840A)-MMLV-Reverse Transcriptase fusion protein containing a NLS. The fusion enzyme nicks targeted DNA/RNA and directs a mutation at a specific site guided by the pegRNA. RT uses the system to deliver replacement DNA sequence. Researchers can customize the pegRNA to target specific DNA sequences to meet their specific needs. For a more in-depth and technical explanation, please see our website.

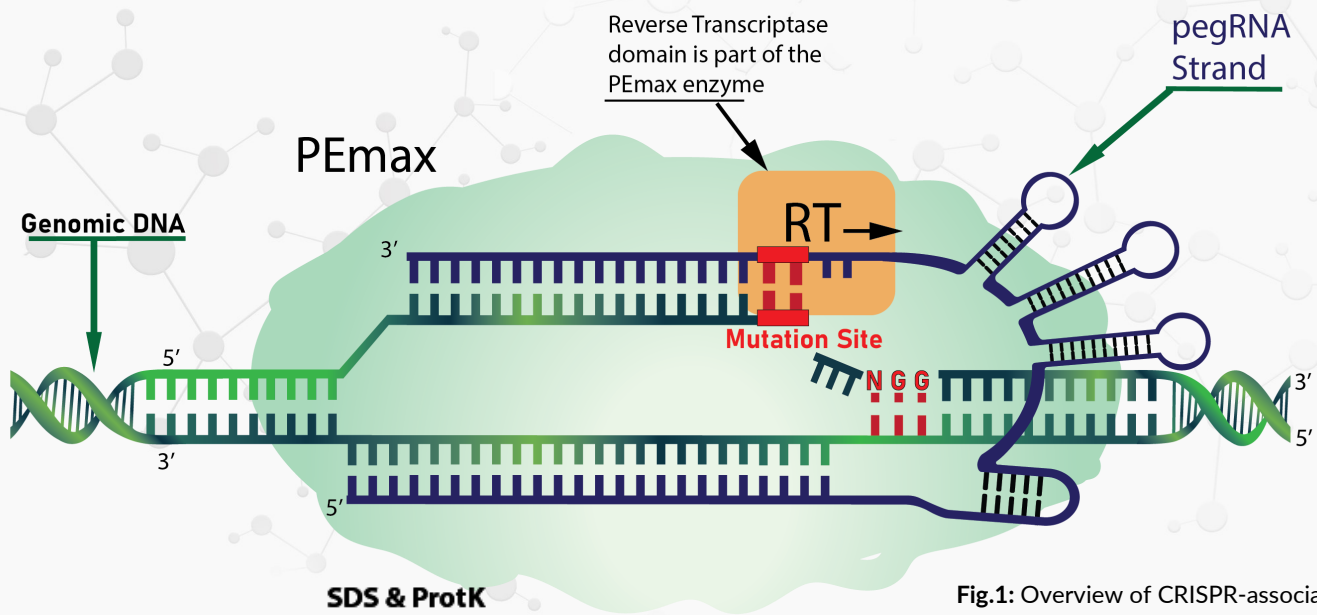
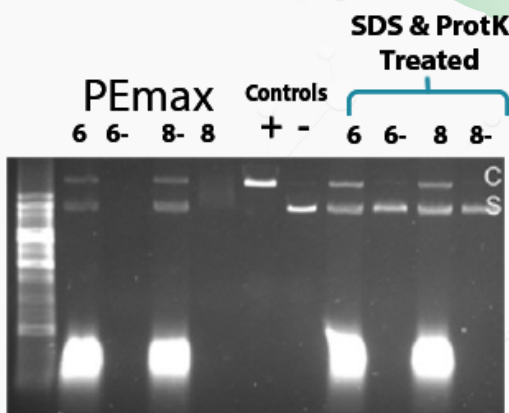


Fig.1: Overview of CRISPR-associated (Cas) system showing a representative prime-editing enzyme oriented with target genomic DNA and pegRNA.



Functional Testing

Fig.2: We have demonstrated that PEmax has specific nicking activity in the presence of an in vitro transcription-synthesized guide pegRNA and has in vitro RT activity*.

*RT data is not shown in this figure.

FastAmp® Solutions and Kits

Product Name	Cat #	Package
FastAmp® Plant Direct PCR Kit	4612	250 rxns
	4615	1250 rxns
FastAmp® Plant Direct PCR & Genotyping Solution	4611	20 mL
FastAmp® DNA, RNA and Cell Solution	4631	50 ml, 100 rxns
	4633	250 ml, 500 rxns
	4636	10 ml, 100 rxns

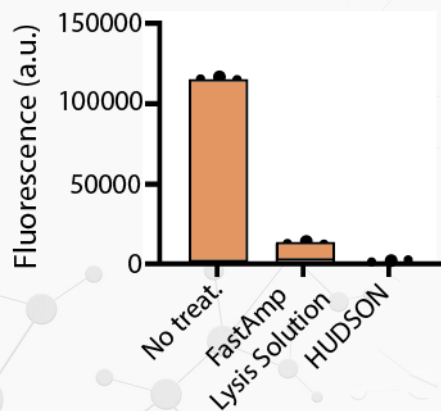
Intact Genomics has developed and manufactures a variety of kits and enzymes useful for various PCR and qPCR needs. These include our proprietary SYBR Green and Probe-based qPCR as well as several kits that streamline the PCR process.

FastAmp® DNA, RNA and Cell Solution streamlines DNA and RNA collection and storage processes. After using the solution, the DNA or RNA from lysed cells or viruses may be directly used in PCR, RT-qPCR, RT-isothermal DNA amplification, without the need of an RNA extraction step.

Polymerases

Product Name	Cat #	Package
i7® High-Fidelity DNA Polymerase	3254	200 units
	3255	500 units
i7® High-Fidelity DNA Polymerase 2X Master Mix	3257	100 rxns
	3259	500 rxns
Taq DNA Polymerase	3243	1000 units
	3245	5000 units
Taq DNA Polymerase w/ dNTP	3243d	1000 units
	3245d	5000 units
Taq DNA Polymerase 2x Premix	3249	500 rxns
	3250	1000 rxns
Hot Start Taq 2x Master Mix	3296	500 rxns
Pfu 2x Master Mix	3326	200 rxns

RNase inactive in saliva by FastAmp lysis Solution



Simplified Cas13-based assays for the fast identification of SARS-CoV-2 and its variants. Nat Biomed Eng. 2022 August ; 6(8): 932-943. doi:10.1038/s41551-022-00889

FastAmp® Solution Key Features & Benefits

- No DNA or RNA extraction is needed.
- Safe for sample transport and maintenance
- Speeds up testing processes.
- Compatible with various types of tissues including plants
- Compatible with different detection technologies
- Low toxicity to humans/environment
- Results approved and published in peer-reviewed journals by top scientists

qPCR Master Mixes

Product Name	Cat #	Package
SYBR Green qPCR 2X Master Mix	3354	200 rxns
	3356	500 rxns
	3357	2000 rxns
igScript™ Probe-Based qPCR Master Mix	4233	500 rxns
	4235	1000 rxns
	4237	2500 rxns

SIMPLIFIED CLONING KITS & ENZYMES

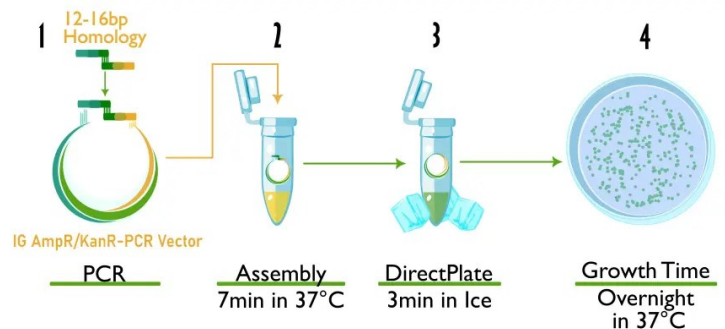
Intact Genomics endeavors to develop the most ground breaking technology in the cloning of large fragments of DNA. Our proprietary Quick10®, igFusion™ Cloning Kits are evidence of our innovation in the field. These great products help make your molecular biology workflow faster and easier.

Product Name	Cat #	Pkg Size	Vol
Quick10™ Cloning Kit	4122	6 rxns	
ig-Fusion™ Cloning Kit	4111	10 rxns	
	4115	50 rxns	
	4117	100 rxns	
ig-Fusion™ Cloning Enzyme Premix	4111-1	10 rxns	
	4115-1	50 rxns	
	4117-1	100 rxns	
T4 DNA Ligase	3212	100,000 rxns	400 units/μl
	3216	100,000 rxns	2000 units/μl
	3217	400,000 rxns	

Product Name	Cat #	Pkg	Vol
Taq DNA Ligase	3219	10,000 units	250μl
T4 Polynucleotide Kinase	3232	2500 units	
T4 DNA Polymerase	3222	500 units	



DNA assembly & transformation in 10 mins



Key Features & Benefits

- Combination of high fidelity PCR, assembly, and DirectPlate® transformation cloning technologies.
- Combination of homologous assembly and ccdB selection, displays <1% false-positive clones or nearly 100% cloning accuracy.
- Assembled/transformed in 10 minutes. Less time and less effort are spent on cloning, transformation, and positive clone screening/identification.

Applications

- Streamlined cloning of one or two (<6 kb total) DNA fragments
- Single PCR product cloning
- Site-directed mutagenesis
- High throughput cloning

Single selection vector or custom vector available upon request

COMPETENT CELLS

E. coli is the workhorse of molecular biology. This bacterial strain is used for foundational microbiology research, recombinant DNA cloning, and heterologous protein expression, among other uses. At Intact Genomics (IG), we've perfected methods to create competent cells, ready for the uptake of DNA with the highest efficiency available. Our competent cells are prepared for chemical transformation procedures or electroporation procedure.



Competent Cells Applications

Our competent cells are used in research for:

- Cloning & Synthetic Biology
- Protein Expression
- Large and small DNA Cloning
- Plant Transgenic Operations
- Phage Display Libraries
- BAC Library Construction
- Plus Much More!

DirectPlate®

DirectPlate XL™

&

For Larger DNA

Chemically Competent Cells

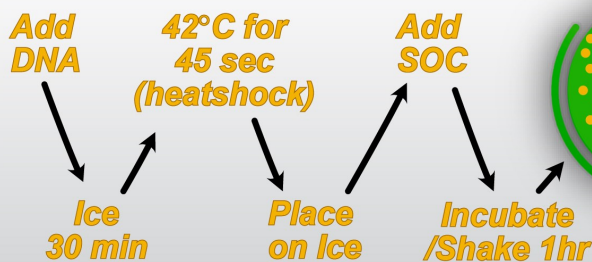
Product Name	Cat #	Volume	Efficiency
DirectPlate® DH5-Alpha	1013-12	12x50 µl	≥1.0 x 10 ⁸
	1013-36	36x50 µl	
DirectPlate® 10B	1015-12	12x50 µl	
	1015-36	36x50 µl	
DirectPlate® BL21 (DE3)	1019-12	12x50 µl	
	1019-36	36x50 µl	
DirectPlate® TG1	1024-12	12x50 µl	
	1024-36	36x50 µl	
DirectPlate XL™ 10B	1094-06	6x50 µl	
	1094-36	36x50 µl	

Feature & Benefits

- Eliminates classic procedure times and processes
- Chemically competent
- Simplified process - mix & plate
- No heat shock
- Robust transformation efficiency



Traditional Transformation



DirectPlate®

- No heat Shock
- Save Time (3min vs. 90+min)
- High Transformation Efficiency

Mix ig DirectPlate® *E. Coli* with DNA
Ice for 3 min

E. coli Competent Cells

Highest Efficiency | Broad Application | Variety of Package Size | Large Collection of Stains

Chemically Competent Cells

Cell Name	Cat #	Volume	Efficiency
ig [®] 10B	1011-06	6x50 µl	≥1.0 x 10 ¹⁰
	1011-12	12x50 µl	
	1011-24	24x50 µl	
	1014-24	6x200 µl	
	1014-48	12x200 µl	
	1018-96	96x20 µl	
ig [®] 5-alpha	1031-06	6x50 µl	≥1.0 x 10 ⁹
	1031-12	12x50 µl	
	1031-24	24x50 µl	
	1034-24	6x200 µl	
	1034-48	12x200 µl	
	1038-96	96x20 µl	
BL21	1041-24	24x50µl	
BL21 (DE3)	1051-06	6x50 µl	≥1.0 x 10 ⁹
	1051-12	12x50 µl	
	1051-24	24x50 µl	
	1054-24	6x200 µl	
BL21 (DE3)pLysS	1056-12	12x50 µl	≥3.0 x 10 ⁷
	1056-48	12x200 µl	
MG1655	1076-12	12x50 µl	≥1.0 x 10 ⁹
HB101	1071-12	6x50 µl	≥1.0 x 10 ⁸
	1071-48	24x50 µl	
ig [®] XL1 Blue Max	1023-12	12x50 µl	≥1.0 x 10 ¹⁰
	1023-24	24x50 µl	
JM109	1061-12	6x50 µl	≥1.0 x 10 ⁸
	1062-48	12x200 µl	
JM109 (DE3)	1063-24	6x200 µl	≥1.0 x 10 ⁸
	1063-48	12x200 µl	
ig [®] Stable 2	1016-12	12x50 µl	≥1.0 x 10 ⁹
	1016-24	24x50 µl	
ig [®] ccdB Resist™	1069-12	12x50 µl	≥1.0 x 10 ⁹
	1069-24	24x50 µl	
ER2738 Phage Display	1017-12	6x100 µl	≥1.0 x 10 ¹⁰
	1017-24	12x100 µl	

Electrocompetent Competent Cells

Cell Name	Cat #	Volume	Efficiency
ig [®] 10B	1212-12	6x50 µl	≥5.0 x 10 ⁵
	1212-24	12x50 µl	
	1214-24	6x100 µl	
	1214-48	12x100 µl	
igMAX™ DH10B	1284-24	6x100 µl	≥5.0 x 10 ⁵
ig [®] 5-alpha	1232-12	6x50 µl	≥2.0 x 10 ¹⁰
	1232-24	12x50 µl	
	1234-48	12x100 µl	
BL21 (DE3)	1252-24	12x50 µl	≥1.0 x 10 ¹⁰
	1252-48	12x100 µl	
BL21 (DE3)pLysS	1256-24	6x100 µl	
	1256-48	12x100µl	
HB101	1271-12	6x50 µl	≥4.0 x 10 ¹⁰
	1271-48	24x50 µl	
ig [®] XL1 Blue Max	1223-12	6x50 µl	≥5.0 x 10 ¹⁰
	1223-24	12x50 µl	
ig [®] Stable 2	1216-12	6x50 µl	≥2.0 x 10 ⁹
	1216-24	12x50 µl	
ig [®] ccdB Resist™	1269-12	6x50 µl	≥1.0 x 10 ⁹
	1269-24	12x50 µl	
ER2738 Phage Display	1217-12	6x100 µl	≥4.0 x 10 ¹⁰
	1217-24	12x100 µl	
SS320 Phage Display	1173-24	12x50 µl	≥5.0 x 10 ¹⁰
	1274-24	6x100 µl	
	1274-48	12x100 µl	
TG1 Phage Display	1263-12	6x50 µl	≥4.0 x 10 ¹⁰
	1263-24	12x50 µl	
	1264-24	6x100 µl	
	1264-48	12x100 µl	

Need more cells?

Visit www.intactgenomics.com to check most current listings and additional package sizes or email sales@intactgenomics.com for Custom Competent Cells services.

AGROBACTERIUM



At IG®, we are a leader in the supply of Agrobacterium and one of the first to develop high-efficiency chemically competent *Agrobacterium* cells in 2020. Today, we've amassed about 30 different species strains of *A. tumefaciens* and *A. rhizogenes*, providing the largest variety of high-quality *Agrobacterium* Competent Cells to meet your research needs. With such a wide variety of strains there are endless research possibilities, and potential to aid in the advancement of plant genetics. Intact Genomics is proud to contribute to the stability and sustainability of agricultural practices world-wide with positive environmental, economic and social impact.

Agrobacterium rhizogenes Chemically Competent Cells

Cell Name	Cat #	Volume	Efficiency
Ar.A4	1072-06	6x50 µl	≥1.0 x 10 ⁵
	1072-18	18x50 µl	
Ar. Qual	1073-06	6x50 µl	
	1073-18	18x50 µl	
K599	1087-06	6x50 µl	
	1087-18	18x50 µl	
ATCC15834	1075-06	6x50 µl	
	1075-18	18x50 µl	
MSU440	1077-06	6x50 µl	
	1077-18	18x50 µl	

Agrobacterium tumefaciens Chemically Competent Cells

Cell Name	Cat #	Volume	Efficiency
GV3101	1082-06	6x50 µl	≥1.0 x 10 ⁵
	1082-10	10x50 µl	
	1082-18	18x50 µl	
AGL1	1083-06	6x50 µl	
	1083-10	10x50 µl	
	1083-18	18x50 µl	
EHA105	1084-06	6x50 µl	
	1084-18	18x50 µl	
LBA4404	1085-06	6x50 µl	
	1085-18	18x50 µl	
C58C1	1086-06	6x50 µl	
	1086-18	18x50µl	
Combo	1091-12	4x3x50 µl	≥1.0 x 10 ⁵

Electrocompetent Cells

Cell Name	Cat #	Volume	Efficiency
Ar.A4	1272-12	6x50 µl	≥1.0 x 10 ⁵
	1272-36	18x50 µl	
Ar. Qual	1273-12	6x50 µl	
	1273-36	18x50 µl	
K599	1287-12	6x50 µl	
	1287-36	18x50 µl	
ATCC15834	1275-12	6x50 µl	
	1275-36	18x50 µl	
MSU440	1277-12	6x50 µl	
	1277-36	18x50 µl	

Electrocompetent Cells

Cell Name	Cat #	Volume	Efficiency
GV3101	1282-12	6x50 µl	≥1.0 x 10 ⁷
	1282-36	18x50 µl	
GV3101 (pSoup)	1282PS-12	6x50µl	
GV3101 (pSoup-p19)	1282PS19-12	6x50µl	
AGL1	1283-12	6x50 µl	
	1283-36	18x50 µl	
EHA105	1284-12	6x50 µl	
	1284-36	18x50 µl	
LBA4404	1285-12	6x50 µl	
	1285-36	18x50 µl	
C58C1	1286-12	10x50µl	
Combo	1290-24	4x3x50 µl	

New

Auxotrophic Agrobacterium

Intact Genomics is the largest and earliest provider of *Agrobacterium* competent cells in the market. We also provide a variety of highly unique strains. *Methionine* or *Thymidine Auxotrophic Agrobacteria* competent cells were added to our portfolio. These cells include a gene deletion that prevents growth unless the required nutrient is supplemented to minimal medium. *Auxotrophic* bacteria can be controlled from overgrowing plant tissues by the absence of the supplement when used in plant transformation.

Methionine Auxotrophic Agrobacterium

Chemically Competent Cells

Cell Name	Cat #	Volume	Efficiency
LBA4404 ^{Met}	1076-05	5x50 µl	≥1.0 x 10 ⁵
	1076-15	15x50 µl	
EHA105 ^{Met}	1078-05	5x50 µl	
	1078-15	15x50 µl	

Electrocompetent Cells

Cell Name	Cat #	Volume	Efficiency
LBA4404 ^{Met}	1276-10	5x50 µl	≥1.0 x 10 ⁷
	1276-30	15x50 µl	
EHA105 ^{Met}	1278-10	5x50 µl	
	1278-30	15x50 µl	

Key benefits:

- Enables development of more efficient transformation systems
- Reduced bacterial overgrowth during co-cultivation
- Decreased need for antibiotics

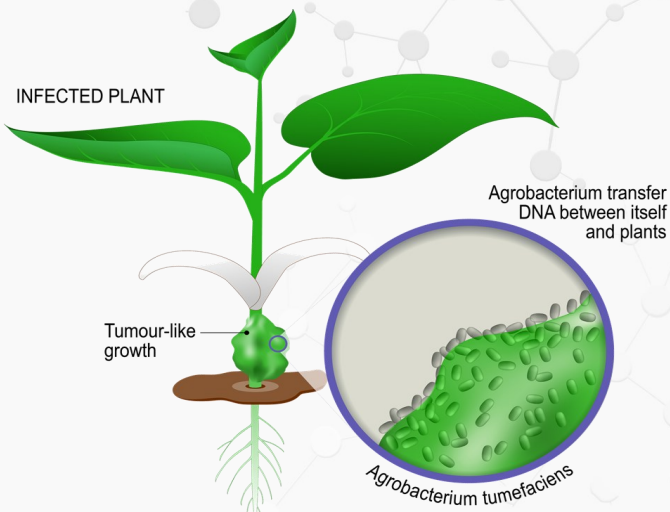
Thymidine Auxotrophic Agrobacterium

Chemically Competent Cells

Cell Name	Cat #	Volume	Efficiency
EHA101 ^{Thy}	1302-05	5x50 µl	≥ 1 x 10 ³
	1302-15	15x50 µl	
EHA105 ^{Thy}	1304-05	5x50 µl	
	1304-15	15x50 µl	
EHA105D ^{Thy}	1306-05	5x50 µl	
	1306-15	15x50 µl	

Electrocompetent Cells

Cell Name	Cat #	Volume	Efficiency
EHA101 ^{Thy}	1402-10	5x50 µl	≥ 1 x 10 ³
	1402-30	15x50 µl	
EHA105 ^{Thy}	1404-10	5x50 µl	
	1404-30	15x50 µl	
EHA105D ^{Thy}	1406-10	5x50 µl	
	1406-30	15x50 µl	



CUSTOM COMPETENT CELLS, ENZYMES & PROTEINS



The scientists at Intact Genomics are the premier experts in competent cells and proteins/enzymes production. Our highly experienced team of scientists provide outstanding personalized service, fast turnaround times, and the most reasonable prices in the industry.

As an ISO 13485:2016 certified business, we take pride in what we do and how we do it. Each new lot of our products is tested to ensure it meets the quality standards and specifications designated for the product. From complex research and development to mass production, we are your go-to for your next big project.

Service Name	Cat #
Custom Competent Cells	9660
Custom Proteins/Enzymes	9680
RPA Enzymes Customization	9688

High-Quality Custom Competent Cells

- **Any Strain** - Custom Competent Cells from any E. coli or other strain.
- **Format Flexibility** - You choose the aliquot size, tube, or 96 well plate.
- **High Transformation efficiency** - Proprietary methods ensure cells provide the highest efficiency.
- **Affordable Pricing** - Save customer time & costs
- **Quick Turnaround** - Receive your strain, optimize transformation and provide results within a week.

End-to-end Protein Expression & Purification

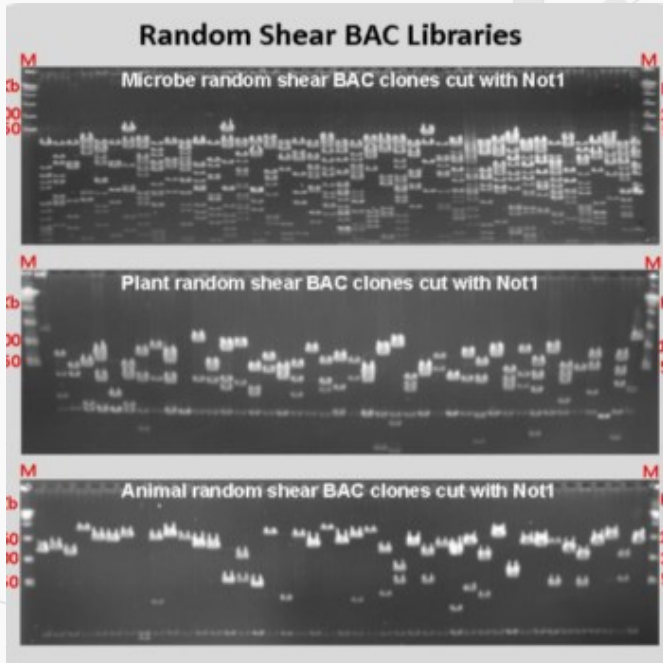
- Vector construction
- Expression optimization
- Purification by AKTA FPLC
- Protein Characterization & Analysis
- Endotoxin testing & Removal



Please contact sales@intactgenomics.com for a no-obligation, custom service request

DNA PREPARATION, LIBRARY CONSTRUCTION & SCREENING

Intact Genomics (IG[®]) is a world leader in large DNA fragment cloning and metagenomic technologies. We provide high-quality custom genomics services including DNA preparation, large insert DNA cloning, manipulation, BAC library construction and screening services to help scientists explore the genome structure and function of microorganisms, plants and animal species.

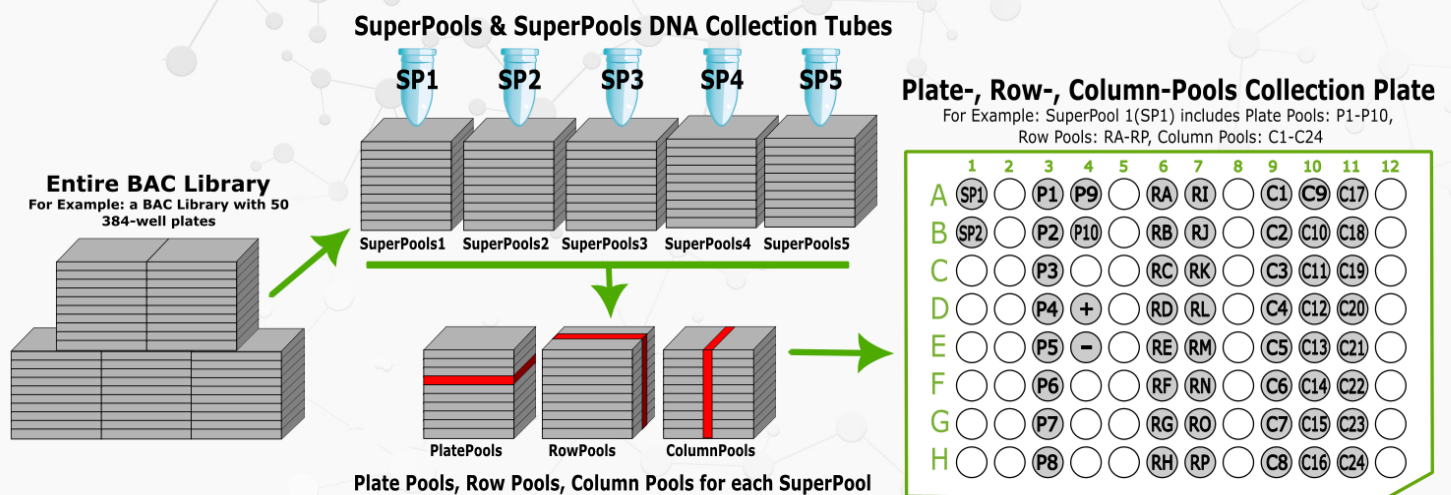


IG[®] Unbiased Random Shear BAC libraries without gaps, complete coverage, dramatically reduced finishing costs.

Service Name	Cat #
HMW DNA Preparation	9010
BAC DNA Preparation	9011
High-Throughput DNA Preparation	9012
Custom Vector Construction	9630
Random Shear BAC Library	9021
Partial Digestion BAC Library	9022
Fosmid Library	9023
BAC Engineering	9620
Large-Insert DNA Cloning and Manipulation	9610
Colony Picking	9031
Colony Duplication	9032
3D DNA Pools	9034

3D DNA Pools for Library Screening

Find your targeted clone in as few as 51 PCR reactions | No radioactivity needed | Fast, simple and accurate



Call us today to speak with our experts!

IG Intact Genomics®

Intact Genomics owns the following registered trademarks granted by the United States Patent and Trademark Office (USPTO): Intact Genomics®, IG®, ig®, igTherapeutics®, FastAmp®, i7®, DirectPlate®.



Intact Genomics, Inc.

11840 Westline Industrial Drive, Suite 120, St. Louis, MO 63146 , USA

P: 314.942.3655 | TF: 1.855.835.7172 | Fax: 314.942.3656

E: sales@intactgenomics.com | www.intactgenomics.com

All products are developed, manufactured and shipped from our laboratories in St. Louis, Missouri, USA
Bulk prices, free samples, custom products, OEM & partnership opportunities available

We are also available from:

